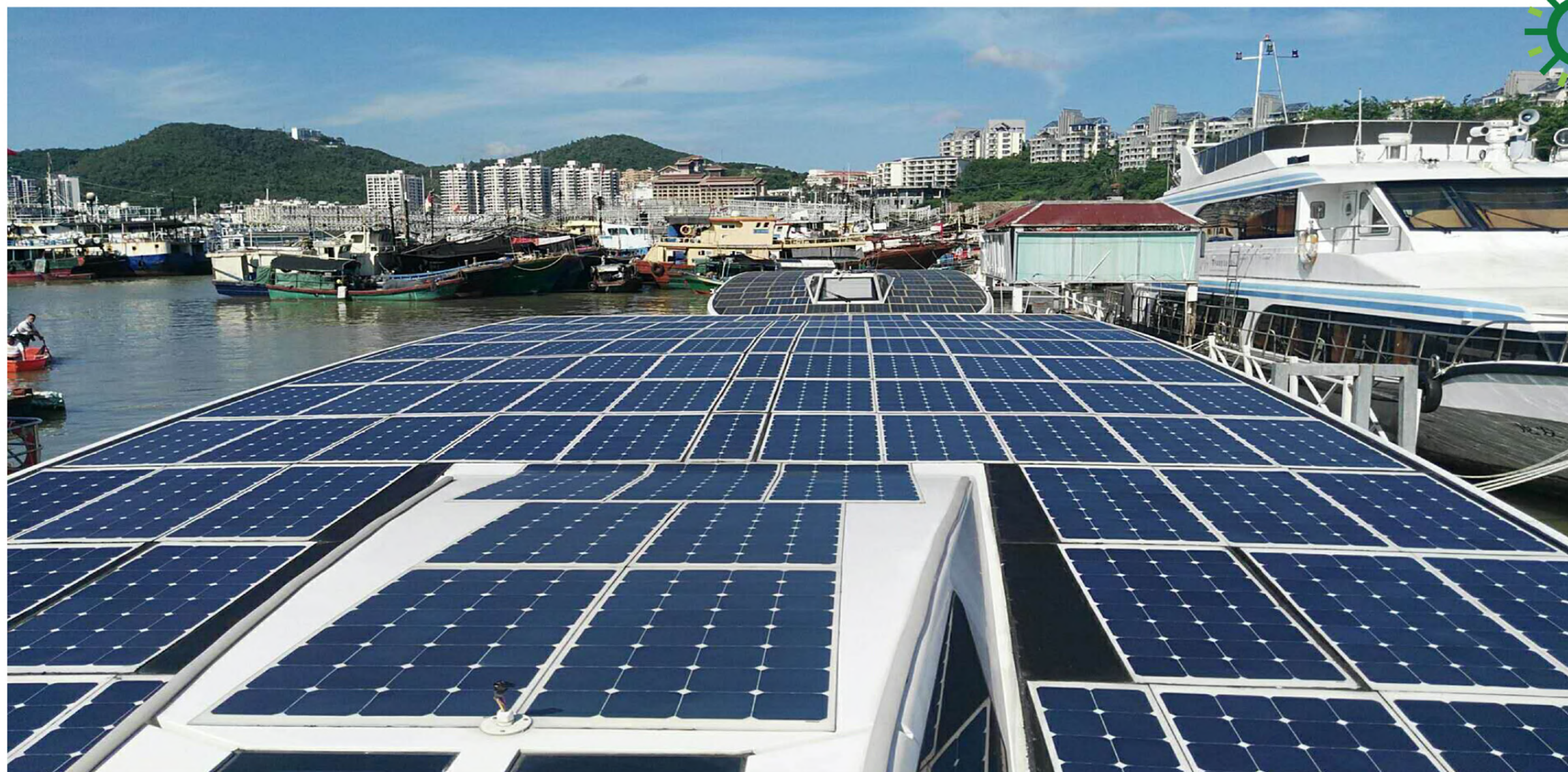




NEWLIGHT ENERGY[®]
Flexible Solar Panel APP



XIAMEN NEWLIGHT ENERGY CO.,LIMITED

(CHINESE MILITARY & GOVERNMENTAL NOMINATED SOLAR PANEL MANUFACTURER)

ADD: No 168,Huizuo Rd, Xinyang Industry, Haicang district,Xiamen,China

Web: www.xmnewlight.com

Tel: 0086 592 6890877

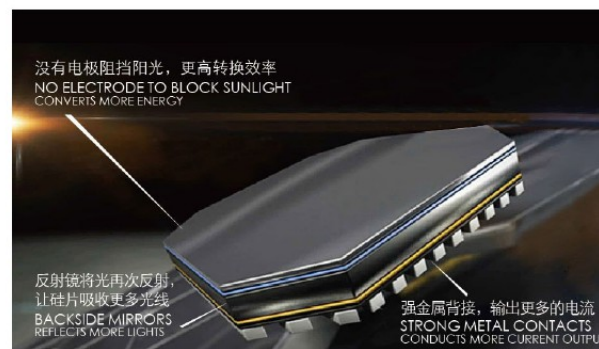
Email: Sales@xmnewlight.com



FLEXIBLE MONOCRYSTALLINE

Silicon Solar Panel

HIGH CONVERSION EFFICIENCY



Adopt unique back contact technology and remove electrodes on the solar cell surface that block the sunshine to increase the solar panel conversion efficiency gratefully.



Advantages



Flexible



Lightweight



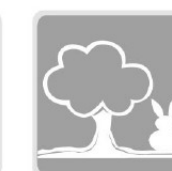
Thin Thickness



Without Glass

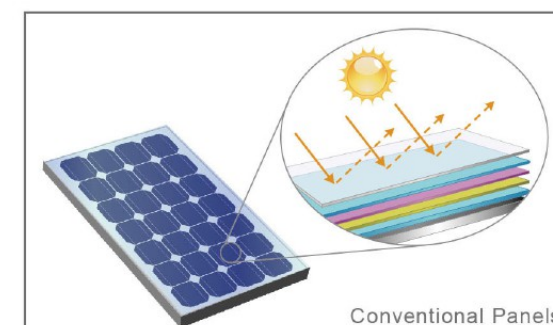
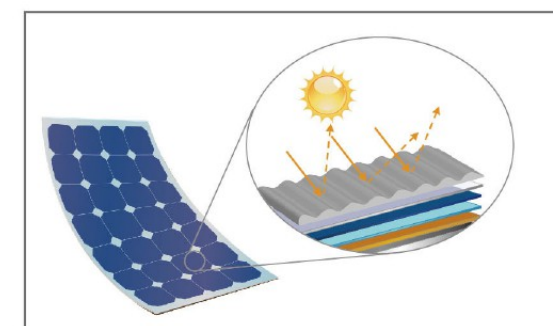


High Efficiency



High Waterproof Grade

Encapsulation Technology



Conventional Panels

OWN PATENT SOLAR CELL ENCAPSULATION TECHNOLOGY

Solve the problem such as monocrystalline silicon organic encapsulation technology and bonding strength, to make the product service life for up to 25 years.

Pressed by concave and convex structure, to avoid the problem of surface mirror, can more fully absorb sunlight, improve the capacity.enhanced the surface in the process of laminating adhesive strength, avoid bubbles, between EVA and avoid fold, suppression of concave and convex point after the angle of the solar panels can be wider scope for installation, avoid the error caused by the installation angle reflection loss;

Solving the combination problem of solar cells and fabric. The weight of our solar panel is only one fifth compared with the same watt glass encapsulated one.

No.	Power (W)	Matrix (solar cell)	Vmp (V)	Imp (A)	Voc (V)	Ics (A)	efficiency (%)	Dimension(mm) Junction box Back or Front	Thickness (mm) without back glue	Weight about(kg) without back glue
1	55W	182 solar cell (4*2)	8.96	6.13	10.75	6.63	23-24.5%	Back L*W: 765*395 Front L*W: 785*395	3mm	0.95
2	85W	182 solar cell (4*3)	13.44	6.33	16.12	6.83		Back L*W: 765*585 Front L*W: 785*585		1.67
3	115W	182 solar cell (4*4)	17.92	6.45	21.50	6.95		Back L*W: 765*765 Front L*W: 795*765		2.22
4	140W	182 solar cell (5*4)	22.40	6.27	26.88	6.75		Back L*W: 960*765 Front L*W: 980*765		2.75
5	155W	166 solar cell (9*3)	30.24	5.13	36.28	5.56		Back L*W: 1580*550 Front L*W: 1600*550		3.25
6	180W	182 solar cell (5*5)	28.0	6.44	33.60	6.94		Back L*W: 960*960 Front L*W: 980*960		3.50
7	215W	182 solar cell (6*5)	33.60	6.40	40.32	6.94		Back L*W: 1140*960 Front L*W: 1160*960		4.12
8	250W	182 solar cell (7*5)	39.20	6.40	47.04	6.94		Back L*W: 1325*960 Front L*W: 1345*960		4.75
9	285W	182 solar cell (8*5)	44.80	6.40	53.76	6.94		Back L*W: 1510*960 Front L*W: 1530*960		5.35
10	300W	166 solar cell (9*6)	30.0	10.10	36.0	10.50		Back L*W: 1550*1050 Front L*W: 1570*1050		6.02
11	320W	182 solar cell (9*5)	50.40	6.35	60.48	6.85		Back L*W: 1695*960 Front L*W: 1715*960		6.10
12	355W	182 solar cell (10*5)	56.0	6.35	67.20	6.85		Back L*W: 1880*960 Front L*W: 1900*960		6.75
13	430W	182 solar cell (10*6)	67.20	6.40	80.64	6.91		Back L*W: 1880*1140 Front L*W: 1900*1140		8.05
14	460W	210 solar cell (8*6)	53.76	8.68	63.6	9.11		Back L*W: 1735*1300 Front L*W: 1750*1300		8.50
15	500W	182 solar cell (10*7)	78.40	6.38	94.08	6.37		Back L*W: 1880*1325 Front L*W: 1900*1325		9.25

Remark:

1. Flexible solar panel is **CUSTOMIZED** according to different **DIMENSION AND VOLTAGE**;
2. We Manufacture For City Governmental And Military Nominated Supplier, Good Quality Guarantee.



Black backsheet



White backsheet

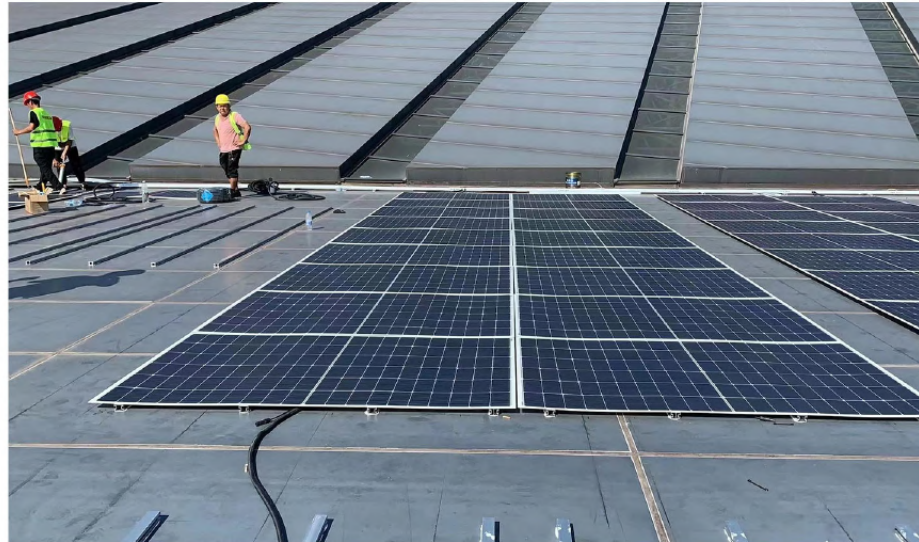
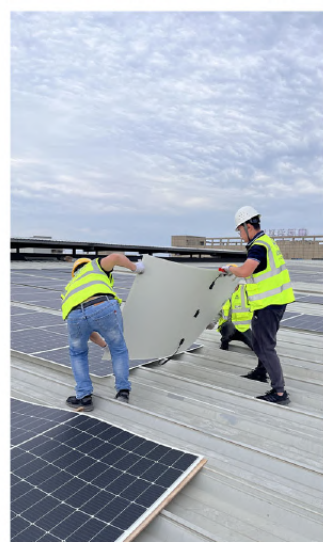
1. Application for Marine:



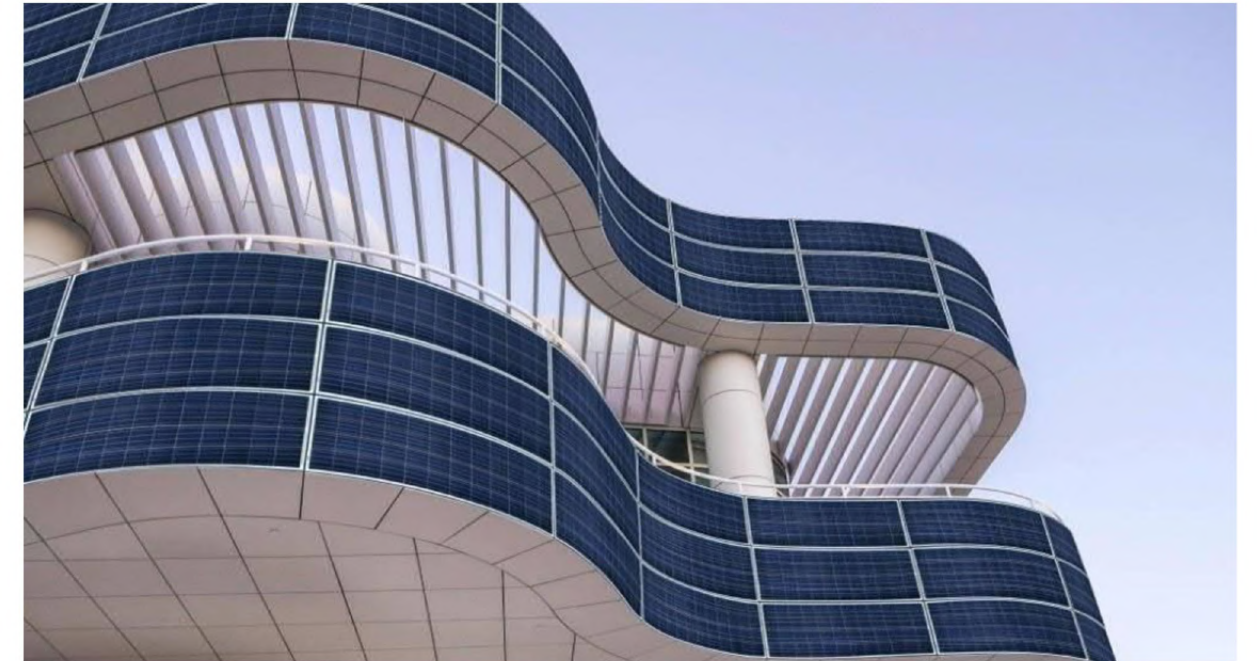
2. Application for RVs:



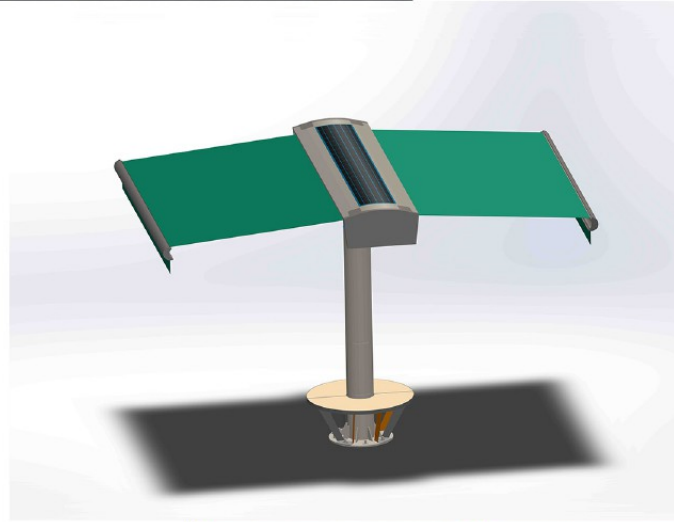
3. Application for Building Roof:



4. Application for Balcony:



5. Application for sunshade:



6. Application for Lighting system:

